

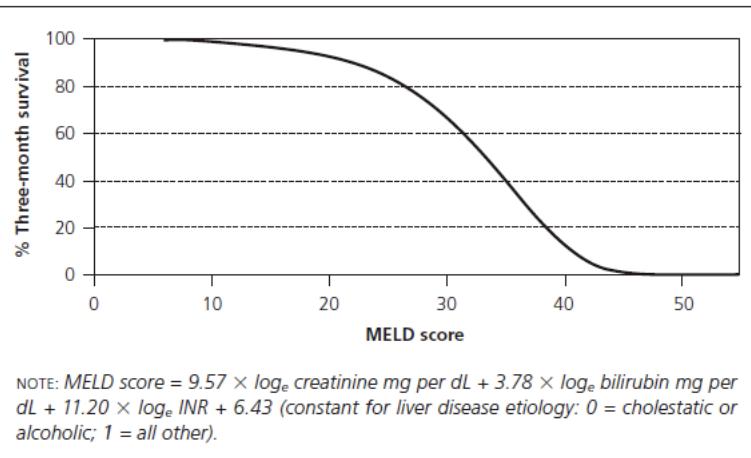
**TABLE 4**  
**Child-Turcotte-Pugh Scoring System**  
**to Assess Liver Disease Severity**

Clinical and laboratory measurements	Points scored for increased abnormality		
	1	2	3
Encephalopathy (grade)	None	1 to 2	3 to 4
Ascites	None	Mild (or controlled by diuretics)	At least moderate despite diuretic treatment
Prothrombin time (seconds prolonged) or INR	<4 <1.7	4 to 6 1.7 to 2.3	>6 >2.3
Albumin (g per dL)	>3.5	2.8 to 3.5	<2.8
Bilirubin (mg per dL)	<2	2 to 3	>3

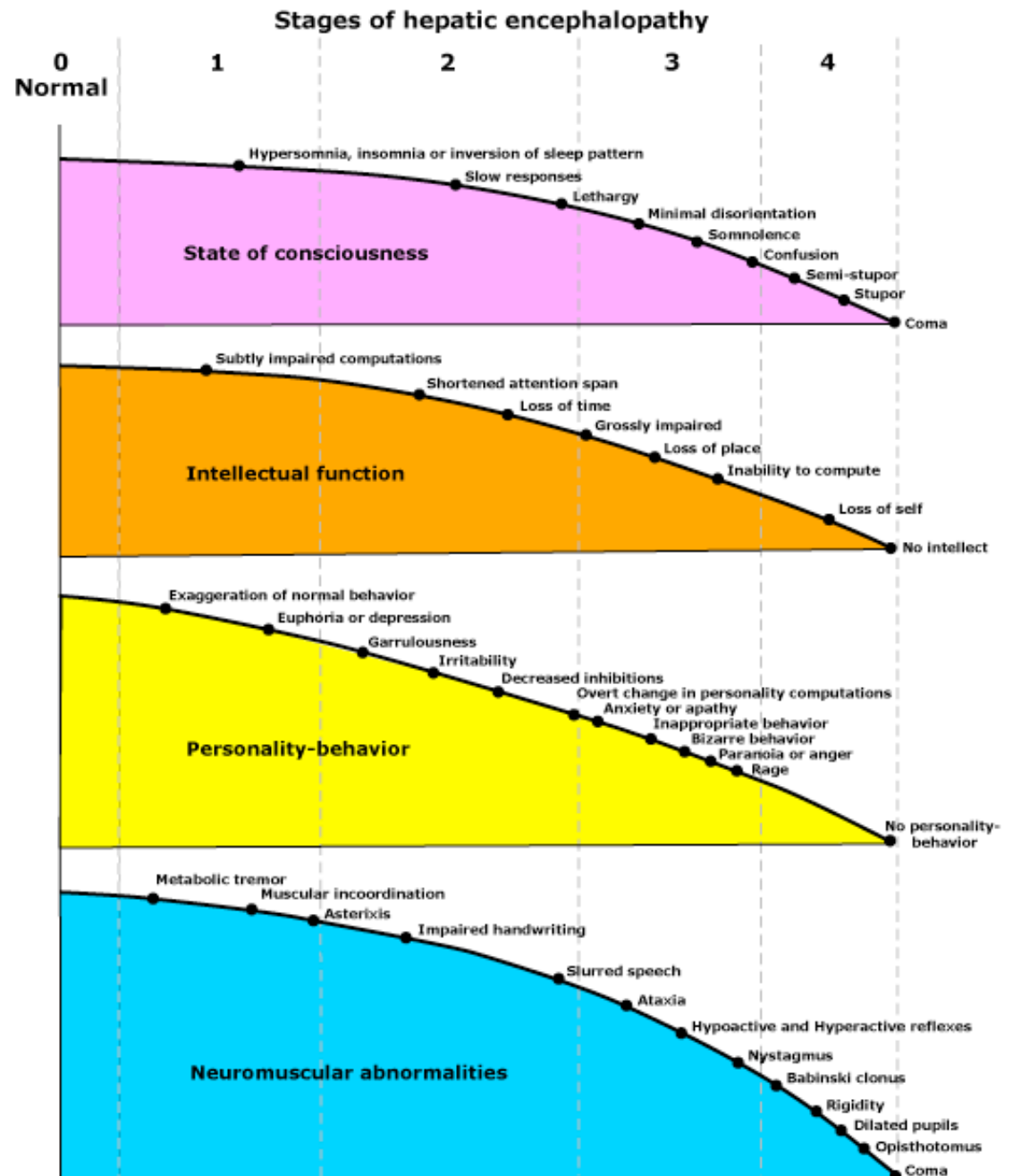
A score of 5 to 6 = grade A; 7 to 9 = grade B; 10 to 15 = grade C.

INR = International Normalized Ratio.

Adapted with permission from Davern TJ, Scharschmidt BF. Biochemical liver tests. In Feldman M, Friedman LS, Sleisenger MH, eds. Sleisenger and Fordtran's Gastrointestinal and Liver Disease: Pathophysiology, Diagnosis, Management. 7th ed. Philadelphia, Pa.: Saunders, 2002: 1236.



**Figure 3.** Estimated three-month survival as a function of the MELD score. (MELD = model for end-stage liver disease; INR = International Normalized Ratio).



<http://www.unos.org/resources/meldpeldcalculator.asp>